

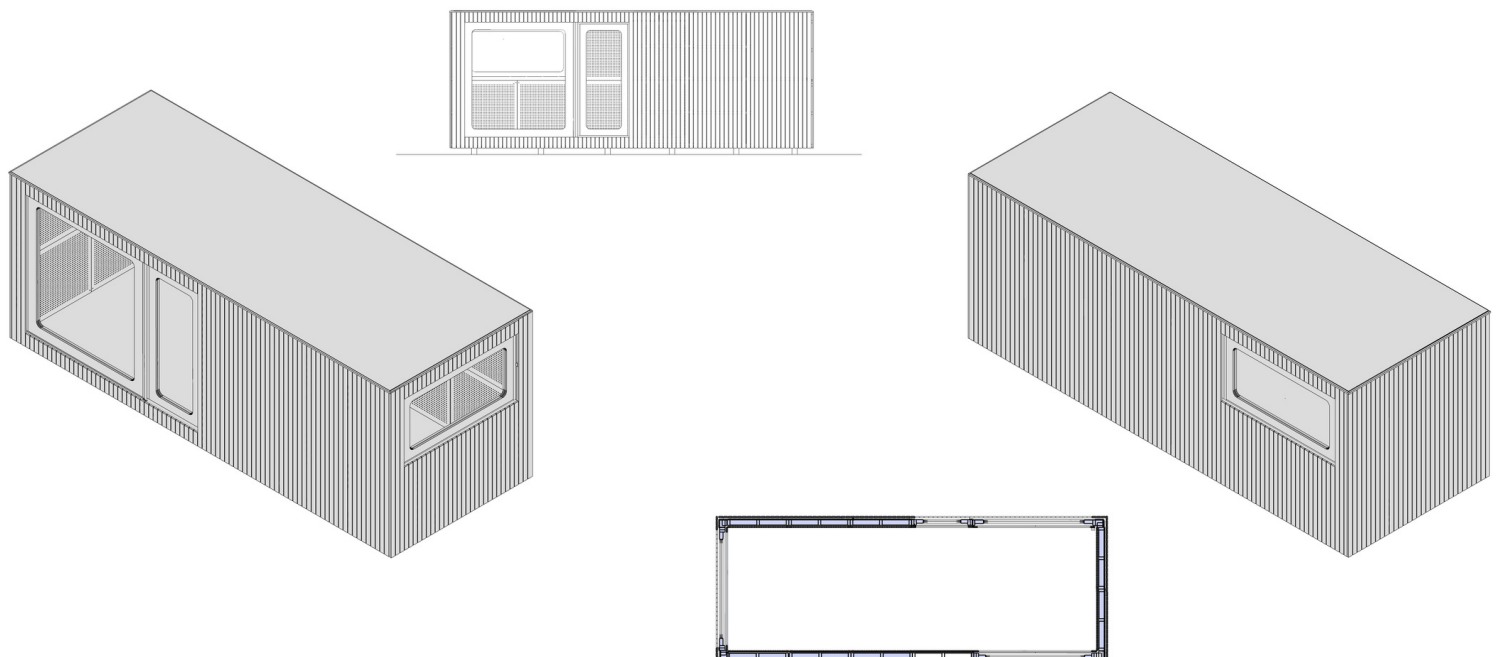
Model Maxi 17,1 sq. m



This model offers a flexible and convertible space, which can be partitioned or equipped with sanitary facilities. It can be used as a large workshop, a teamwork space or even as a light accommodation (with permit). Installed in the countryside or in a large garden, it subtly blurs the line between inside and outside.

Exterior dimensions :	width : 2.52m length : 6.8m height : 2.50m	Insulation :	frontage : 8cm roof/ground: 10cm, U = 0.4 W/m2K
Interior dimensions :	width : 2.14m length : 6.42m height : 2.20m	Safety :	lock with key, double glazing Securit
Surface :	net : 13.7m2 gross : 17.1m2	Ventilation :	mechanical extraction system + adjustable natural air supply
Foundations :	adjustable feet on stabilized ground / foundation screw (150cm) on soft ground	Options :	<ul style="list-style-type: none">• type of heating/cooling• materials• green roof and/or solar panels• blinds
Roofing :	EPDM + options	Delivery :	Delivery and placement are included in the offer. Woodcab's are delivered ready to use.

- THE LAYOUT OF THE MODEL BELOW IS A PROPOSAL -
Woodcab is customizable : you can choose the number and location of glass modules and furniture elements according to your desires.





BASIC MODEL : MAXI_17 sq. m gross (ext.dim 2,52m/6,8m)

38 685,00 €

1	Exterior material : Oiled natural pine cladding
2	Walls : 8cm wood fiber insulation (U =0.4 W/m2K)
3	Roof : EPDM sheet with discharge of water, 10cm wood fiber insulation (U = 0.35 W/m2K) optional green roof on request, optional solar photovoltaic
4	Glazed door : double glazing solid wood frames (H205xL90), black metal hardware
5	Windows : horizontal opening (H90xL205) + large non-opening (H180xL180) double glazing with wooden frame
6	Ventilation : decentralized silent extractor with heat recovery (Nicoll 320670)
7	Electricity : connection to the network via waterproof wiring + 2 socket (Niko) 230V black + 1 switch to a light point on the wall, RJ 45 ethernet socket
8	Fire detection : approved smoke detector
9	Breach security : locks with keys
10	Interior walls : perforated pine plywood
11	Ground : raw OSB coating
12	Foundations : adjustable feet / foundation screws if poor soil _to be validated according to the place
13	Delivery and installation by crane truck

OPTIONS

14	External cladding : Supplemental burnt wood cladding Shou Sugi Ban technique	1 000,00 €
15	Interior walls : perforated birch plywood	1 285,00 €
16	Interior ground material : oak flooring (2,5mm Semi-solid)	1 540,00 €
17	Interior ground material : marmoleum	1 380,00 €
18	Partition : Interior partition wall with a door	1 500,00 €
19	Built-in furniture : desk (360€) + shelf (200€)	560,00 €
20	Heating/cooling : hot-cold air conditioner with heat pump without outdoor unit 900	1 300,00 €
21	Assembly and delivery : to be validated according to the place	0,00 €
22	Extra : green roof	1 340,00 €
23	Extra : access step	250,00 €
24	Extra : terrace	3 180,00 €
25	Extra : projection blind	1 800,00 €

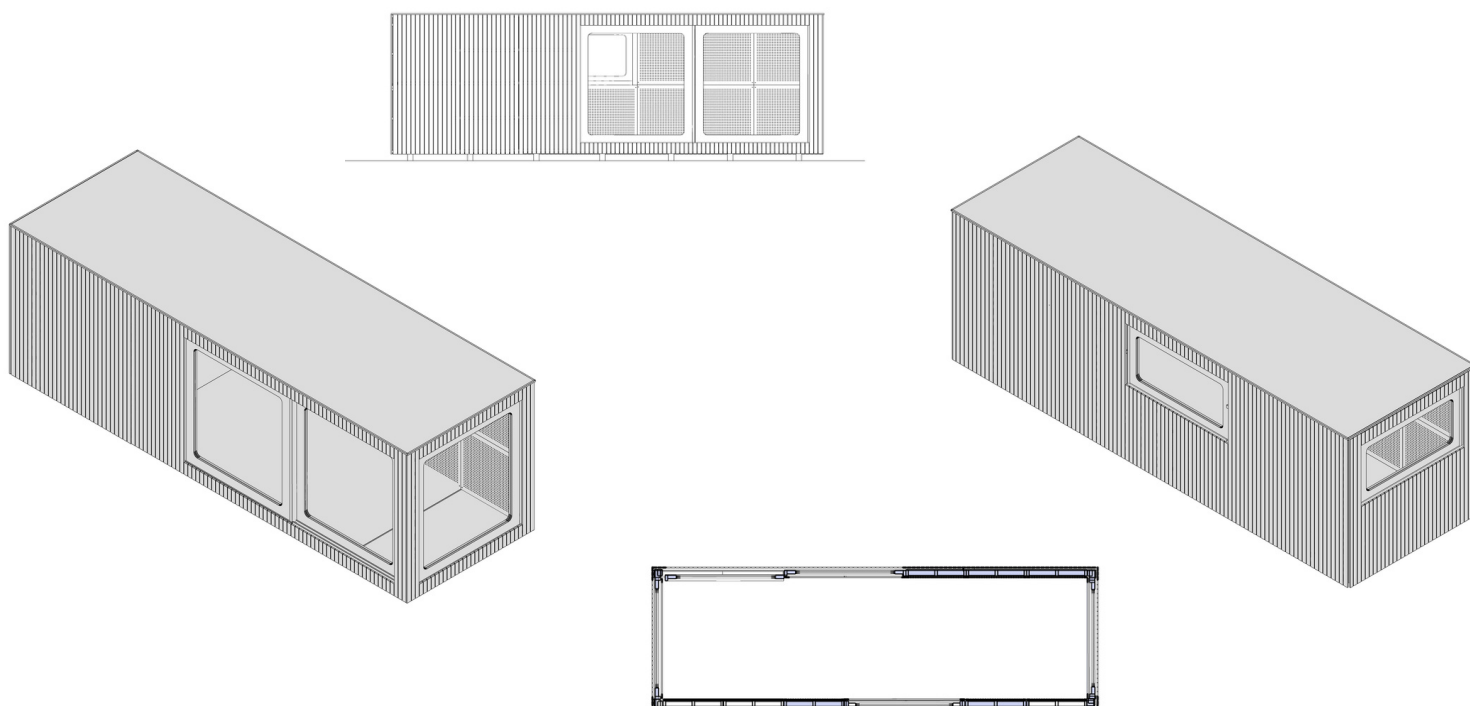
Model Maxi 19,8 sq. m



This model offers a flexible and convertible space, which can be partitioned or equipped with sanitary facilities. It can be used as a large workshop, a teamwork space or even as a light accommodation (with permit). Installed in the countryside or in a large garden, it subtly blurs the line between inside and outside.

Exterior dimensions :	width : 2.52m length : 7.87m height : 2.50m	Insulation :	frontage : 8cm roof/ground: 10cm, U = 0.4 W/m2K
Interior dimensions :	width : 2.14m length : 7.49m height : 2.20m	Safety :	lock with key, double glazing Securit
Surface :	net : 16m2 gross : 19.8m2	Ventilation :	mechanical extraction system + adjustable natural air supply
Foundations :	adjustable feet on stabilized ground / foundation screw (150cm) on soft ground	Options :	<ul style="list-style-type: none">• type of heating/cooling• materials• green roof and/or solar panels• blinds
Roofing :	EPDM + options	Delivery :	Delivery and placement are included in the offer. Woodcab's are delivered ready to use.

- THE LAYOUT OF THE MODEL BELOW IS A PROPOSAL -
Woodcab is customizable : you can choose the number and location of glass modules and furniture elements according to your desires.





BASIC MODEL : MAXI_20 sq. m gross (ext.dim 2,52m/7,87m)

43 700,00 €

1	Exterior material : Oiled natural pine cladding
2	Walls : 8cm wood fiber insulation (U =0.4 W/m2K)
3	Roof : EPDM sheet with discharge of water, 10cm wood fiber insulation (U = 0.35 W/m2K) optional green roof on request, optional solar photovoltaic
4	Glazed door : double glazing solid wood frames (H205xL90), black metal hardware
5	Windows : horizontal opening (H90xL205) + large non-opening (H180xL180) double glazing with wooden frame
6	Ventilation : decentralized silent extractor with heat recovery (Nicoll 320670)
7	Electricity : connection to the network via waterproof wiring + 2 socket (Niko) 230V black + 1 switch to a light point on the wall, RJ 45 ethernet socket
8	Fire detection : approved smoke detector
9	Breach security : locks with keys
10	Interior walls : perforated pine plywood
11	Ground : raw OSB coating
12	Foundations : adjustable feet / foundation screws if poor soil _to be validated according to the place
13	Delivery and installation by crane truck

OPTIONS

14	External cladding : Supplemental burnt wood cladding Shou Sugi Ban technique	1 125,00 €
15	Interior walls : perforated birch plywood	1 485,00 €
16	Interior ground material : oak flooring (2,5mm Semi-solid)	1 785,00 €
17	Interior ground material : marmoleum	1 600,00 €
18	Partition : Interior partition wall with a door	1 500,00 €
19	Built-in furniture : desk (360€) + shelf (200€)	560,00 €
20	Heating/cooling : hot-cold air conditioner with heat pump without outdoor unit 900	1 300,00 €
21	Assembly and delivery : to be validated according to the place	0,00 €
22	Extra : green roof	1 550,00 €
23	Extra : access step	250,00 €
24	Extra : terrace	3 520,00 €
25	Extra : projection blind	1 800,00 €



Included in your basic Woodcab :

Exterior cladding :	Oiled natural pine cladding
Window frames :	Larch wood frame, double glazing
Structure :	KVH spruce wood
Insulation :	100% Belgian grass fibre (Gramitherm®)
Sealing :	Roof: black EPDM 1.5mm Walls and floor: rain screen panels high performance air sealing membrane + tape
Floors :	OSB wood panels
Interior wall material :	Perforated pine plywood
Electricity :	220 volt cable for plug and play connection to the network : - 2 indoor sockets - 1 switch to a light point - 1 switch to the ventilation
Ventilation :	Invisible silent motorised extraction + adjustable mechanical air intake



Options :

Exterior cladding :	Burnt wood covering with the Shou sugi Ban technique
Interior wall cladding :	Solid or perforated birch or beech plywood
Floor covering :	Floating floor in semi-massive oak (2.5mm solid) or Linoleum Forbo Modular
Partition :	Interior partition wall (not for the model Tiny)
Built-in furniture :	Shelves size 80 cm or 180 cm, desk, bench
Access step :	Massive landing step in burnt wood
Terrace :	Prefabricated terrace made of local heat-treated wood
Heating :	<ul style="list-style-type: none">• Air conditioner with hot/cold heat pump without outdoor unit• Black design electric radiator
Roof :	Green roof Solar panels on request (redirected to our preferred partner)
Window :	Large sliding door (400/200)
Window blind :	Projection blinds or straight sliding blinds, electric or manual

Transport and installation included :

Foundations :

Removable lightweight foundation screws

Transport :

Conventional truck (maximum width 252cm)

Placement :

Via the articulated arm of the truck, mobile crane or other rapid lifting system
EXTRA: crane supplement + distance to be confirmed depending on location

