

Model Cosy 11,7 sq. m



Need an office for two, a dedicated yoga space or a bright workshop ?
This model offers the perfect compromise in a space suitable for movement and storage.
Well placed in a garden on the outskirts of town, it combines a comfortable interior with a natural feel.

Exterior dimensions : width : 2.52m
length : 4.66m
height : 2.50m

Interior dimensions : width : 2.14m
length : 4.28m
height : 2.20m

Surface : net : 9.1m²
gross : 11.7m²

Foundations : adjustable feet
on stabilized ground /
foundation screw (150cm)
on soft ground

Roofing : EPDM + options

Insulation : frontage : 8cm
roof/ground: 10cm, U = 0.4 W/m²K

Safety : lock with key, double glazing Securit

Ventilation : mechanical extraction system
+ adjustable natural air supply

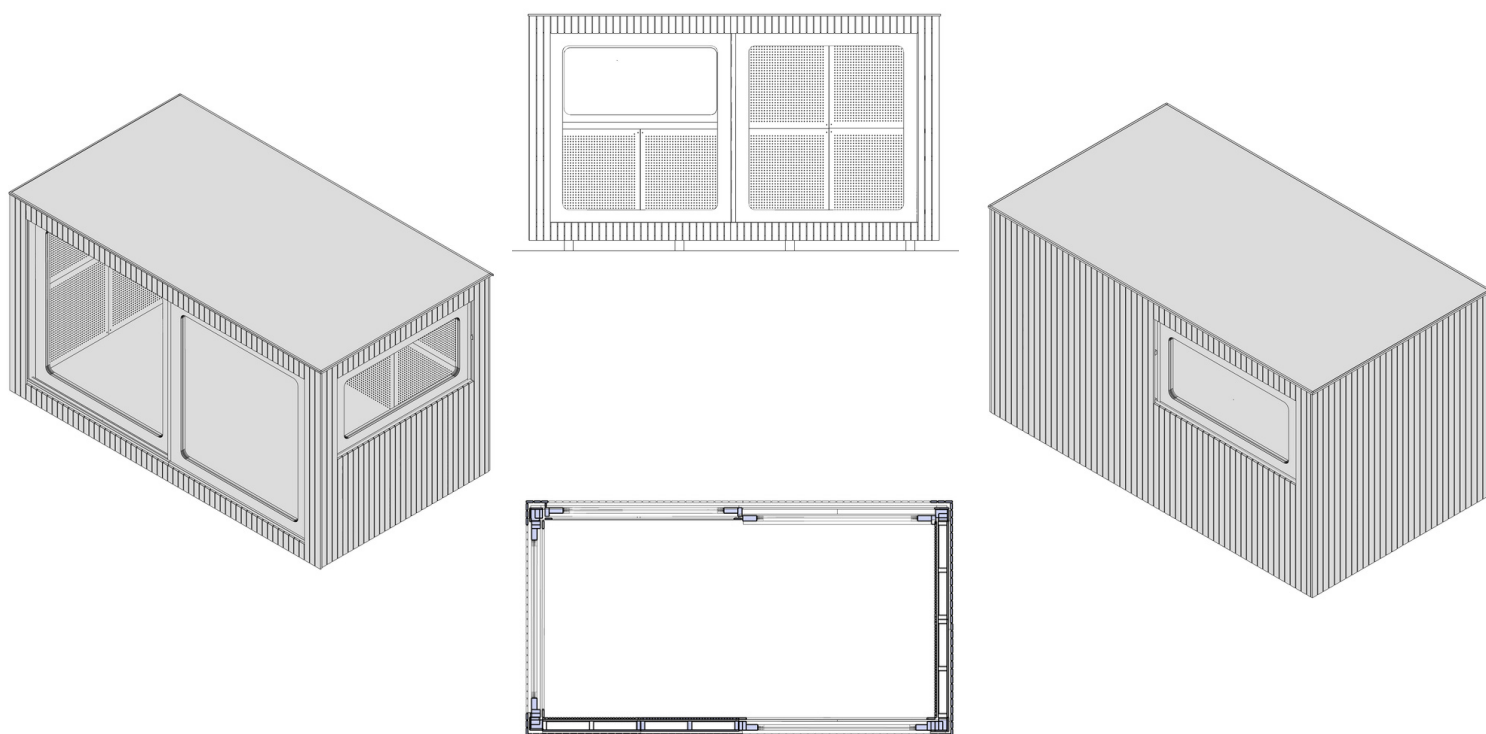
Options :

- type of heating/cooling
- materials
- green roof and/or solar panels
- blinds

Delivery : Delivery and placement are included in the offer.
Woodcab's are delivered ready to use.

- THE LAYOUT OF THE MODEL BELOW IS A PROPOSAL -

Woodcab is customizable : you can choose the number and location of glass modules and furniture elements according to your desires.





BASIC MODEL : COSY_12 sq. m gross (ext.dim 2,52m/4,66m)

28 250,00 €

1	Exterior material : Oiled natural pine cladding
2	Walls : 8cm wood fiber insulation (U =0.4 W/m2K)
3	Roof : EPDM sheet with discharge of water, 10cm wood fiber insulation (U = 0.35 W/m2K) optional green roof on request, optional solar photovoltaic
4	Glazed door : double glazing solid wood frames (H205xL90), black metal hardware
5	Windows : horizontal opening (H90xL205) + large non-opening (H180xL180) double glazing with wooden frame
6	Ventilation : decentralized silent extractor with heat recovery (Nicoll 320670)
7	Electricity : connection to the network via waterproof wiring + 2 socket (Niko) 230V black + 1 switch to a light point on the wall, RJ 45 ethernet socket
8	Fire detection : approved smoke detector
9	Breach security : locks with keys
10	Interior walls : perforated pine plywood
11	Ground : raw OSB coating
12	Foundations : adjustable feet / foundation screws if poor soil _to be validated according to the place
13	Delivery and installation by crane truck

OPTIONS

14	External cladding : Supplemental burnt wood cladding Shou Sugi Ban technique	750,00 €
15	Interior walls : perforated birch plywood	880,00 €
16	Interior ground material : oak flooring (2,5mm Semi-solid)	1 055,00 €
17	Interior ground material : marmoleum	945,00 €
18	Partition : interior partition wall with a door not for the tiny model	X
19	Built-in furniture : desk (360€) + shelf (200€)	560,00 €
20	Heating/cooling : hot-cold air conditioner with heat pump without outdoor unit 900	1 300,00 €
21	Assembly and delivery : to be validated according to the place	0,00 €
22	Extra : green roof	920,00 €
23	Extra : access step	250,00 €
24	Extra : terrace	2 490,00 €
25	Extra : projection blind	1 800,00 €

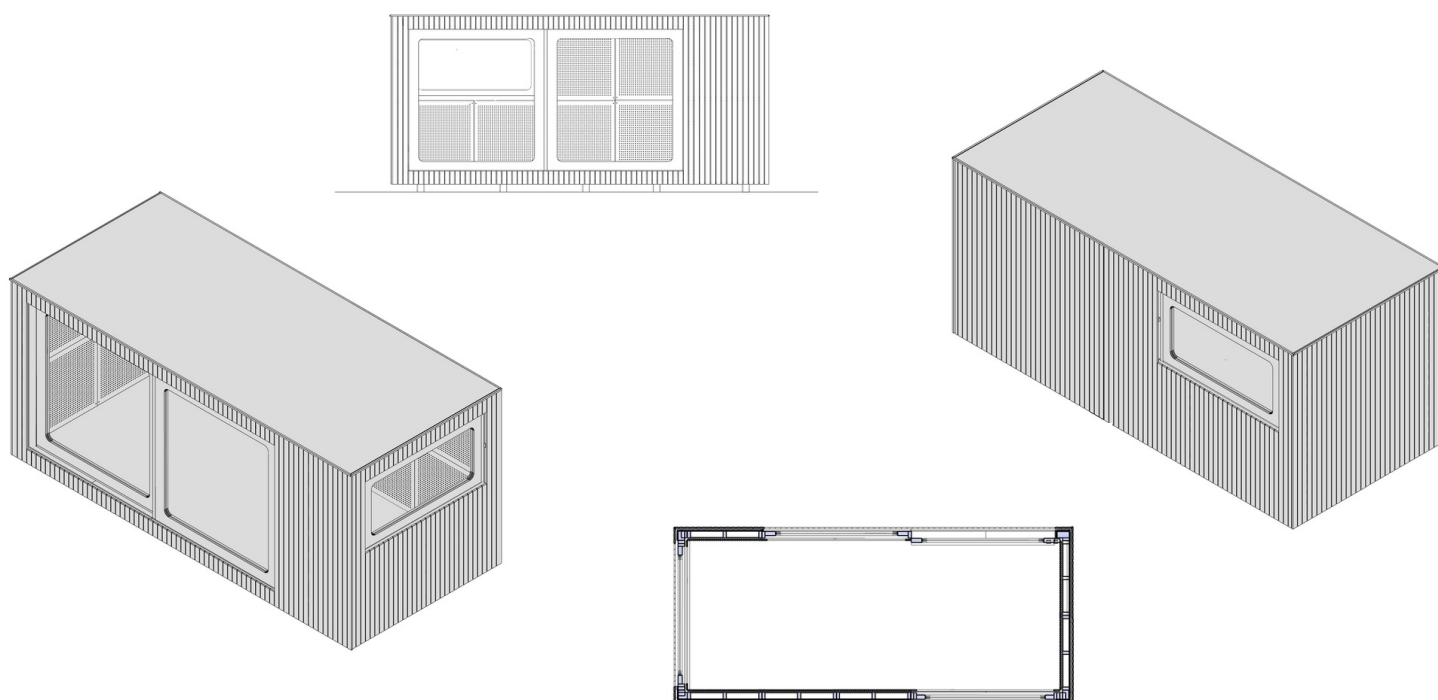
Model Cosy 14,4 sq. m



Need an office for two, a dedicated yoga space or a bright workshop ?
This model offers the perfect compromise in a space suitable for movement and storage.
Well placed in a garden on the outskirts of town, it combines a comfortable interior with a natural feel.

Exterior dimensions :	width : 2.52m length : 5.73m height : 2.50m	Insulation :	frontage : 8cm roof/ground: 10cm, U = 0.4 W/m2K
Interior dimensions :	width : 2.14m length : 5.35m height : 2.20m	Safety :	lock with key, double glazing Securit
Surface :	net : 11.4m2 gross : 14.4m2	Ventilation :	mechanical extraction system + adjustable natural air supply
Foundations :	adjustable feet on stabilized ground / foundation screw (150cm) on soft ground	Options :	<ul style="list-style-type: none">• type of heating/cooling• materials• green roof and/or solar panels• blinds
Roofing :	EPDM + options	Delivery :	Delivery and placement are included in the offer. Woodcab's are delivered ready to use.

- THE LAYOUT OF THE MODEL BELOW IS A PROPOSAL -
Woodcab is customizable : you can choose the number and location of glass modules and furniture elements according to your desires.





BASIC MODEL : TINY_14 sq. m gross (ext.dim 2,52m/5,73m)

33 400,00 €

1	Exterior material : Oiled natural pine cladding
2	Walls : 8cm wood fiber insulation (U =0.4 W/m2K)
3	Roof : EPDM sheet with discharge of water, 10cm wood fiber insulation (U = 0.35 W/m2K) optional green roof on request, optional solar photovoltaic
4	Glazed door : double glazing solid wood frames (H205xL90), black metal hardware
5	Windows : horizontal opening (H90xL205) + large non-opening (H180xL180) double glazing with wooden frame
6	Ventilation : decentralized silent extractor with heat recovery (Nicoll 320670)
7	Electricity : connection to the network via waterproof wiring + 2 socket (Niko) 230V black + 1 switch to a light point on the wall, RJ 45 ethernet socket
8	Fire detection : approved smoke detector
9	Breach security : locks with keys
10	Interior walls : perforated pine plywood
11	Ground : raw OSB coating
12	Foundations : adjustable feet / foundation screws if poor soil _to be validated according to the place
13	Delivery and installation by crane truck

OPTIONS

14	External cladding : Supplemental burnt wood cladding Shou Sugi Ban technique	875,00 €
15	Interior walls : perforated birch plywood	1 080,00 €
16	Interior ground material : oak flooring (2,5mm Semi-solid)	1 300,00 €
17	Interior ground material : marmoleum	1 170,00 €
18	Partition : Interior partition wall with a door	1 500,00 €
19	Built-in furniture : desk (360€) + shelf (200€)	560,00 €
20	Heating/cooling : hot-cold air conditioner with heat pump without outdoor unit 900	1 300,00 €
21	Assembly and delivery : to be validated according to the place	0,00 €
22	Extra : green roof	1 130,00 €
23	Extra : access step	250,00 €
24	Extra : terrace	2 850,00 €
25	Extra : projection blind	1 800,00 €



Included in your basic Woodcab :

Exterior cladding :	Oiled natural pine cladding
Window frames :	Larch wood frame, double glazing
Structure :	KVH spruce wood
Insulation :	100% Belgian grass fibre (Gramitherm®)
Sealing :	Roof: black EPDM 1.5mm Walls and floor: rain screen panels high performance air sealing membrane + tape
Floors :	OSB wood panels
Interior wall material :	Perforated pine plywood
Electricity :	220 volt cable for plug and play connection to the network : - 2 indoor sockets - 1 switch to a light point - 1 switch to the ventilation
Ventilation :	Invisible silent motorised extraction + adjustable mechanical air intake



Options :

Exterior cladding :	Burnt wood covering with the Shou sugi Ban technique
Interior wall cladding :	Solid or perforated birch or beech plywood
Floor covering :	Floating floor in semi-massive oak (2.5mm solid) or Linoleum Forbo Modular
Partition :	Interior partition wall (not for the model Tiny)
Built-in furniture :	Shelves size 80 cm or 180 cm, desk, bench
Access step :	Massive landing step in burnt wood
Terrace :	Prefabricated terrace made of local heat-treated wood
Heating :	<ul style="list-style-type: none">• Air conditioner with hot/cold heat pump without outdoor unit• Black design electric radiator
Roof :	Green roof Solar panels on request (redirected to our preferred partner)
Window :	Large sliding door (400/200)
Window blind :	Projection blinds or straight sliding blinds, electric or manual

Transport and installation included :

Foundations :

Removable lightweight foundation screws

Transport :

Conventional truck (maximum width 252cm)

Placement :

Via the articulated arm of the truck, mobile crane or other rapid lifting system
EXTRA: crane supplement + distance to be confirmed depending on location

